

*San Joaquin County*  
**SHERIFF'S OFFICE**



**175<sup>TH</sup> ANNIVERSARY**

**2025 ANNUAL REPORT**

*Protecting San Joaquin County Since 1850*



**PATRICK WITHROW**  
Sheriff, San Joaquin County



**BRIAN BARNES**  
Undersheriff



**MARCUS SMITH**  
Assistant Sheriff,  
Operations



**MICHAEL EASTIN**  
Assistant Sheriff,  
Custody

The year 2025 was one of reflection, progress, and purpose for the San Joaquin County Sheriff's Office as we marked 175 years of service to this community. Since 1850, this Office has evolved alongside San Joaquin County, responding to new challenges, embracing innovation, and remaining grounded in a commitment to protect, serve, and lead with integrity.

This annual report captures a year defined by both complexity and collaboration. From major criminal investigations and cold case breakthroughs to large-scale enforcement operations, emergency responses, and new public safety initiatives, our personnel demonstrated professionalism and resolve. In moments that demanded swift action and steady leadership, they rose to the challenge. At the same time, we strengthened our connection with the community through outreach efforts, recruitment initiatives, and programs rooted in compassion and service.

Throughout 2025, we continued investing in the future of this Office. The opening of new facilities, the launch of specialized teams, advancements in forensic technology, and expanded training opportunities reflect our commitment to preparedness and accountability. These efforts are not just about infrastructure or equipment, they are about ensuring our deputies, correctional officers, and professional staff have the resources they need to serve the public safely and effectively.

As we honor 175 years of service, we also recognize that our legacy is built on people. I am deeply grateful to the men and women of the Sheriff's Office whose dedication, skill, and perseverance carry this organization forward every day. I also thank our community partners and the residents of San Joaquin County for their trust, support, and collaboration. Together, we have faced challenges, celebrated milestones, and worked toward a shared goal of safer neighborhoods and stronger communities.

This report reflects where we have been, the work accomplished in 2025, and the foundation we continue to build for the future. I am proud of what this Office represents and confident in the path ahead as we carry forward 175 years of service into the next chapter.

*Sheriff Patrick Withrow*

**INTEGRITY • RESPECT • HONOR • COURAGE • PROFESSIONALISM • DIGNITY • PARTNERSHIP**



This limited-edition badge was created to honor the generations of men and women who have served since 1850. More than a symbol of authority, it represents 175 years of hard work, sacrifice, and an unwavering commitment to protecting our community.

Every detail reflects our history. The ball-tipped stars pay tribute to early badge designs of the late nineteenth and early twentieth centuries. Beyond their distinctive appearance, the rounded tips were believed to offer a practical layer of protection, reinforcing the badge as both a symbol and a shield for the officer who wore it.

The inclusion of the California walking bear honors Sheriff Harvey O'Dell, who in 1930 established a duty badge incorporating the bear, linking the Office to the broader heritage of California. Its presence on this commemorative badge underscores our deep roots in the state's history and the enduring role of the Sheriff's Office within it.

As we mark 175 years of service, this badge stands as a reminder of the foundation laid by those who came before us and the responsibility we carry forward. We honor the past, recognize the present, and reaffirm our commitment to protect San Joaquin County for generations to come.

Protecting San Joaquin since 1850.

# 8 SAN JOAQUIN COUNTY DEMOGRAPHICS

<b>POPULATION</b> 816,108 people	<b>UNDER AGE 18</b> 25.3%	<b>AGES 18-64</b> 61%	<b>AGES 65 &amp; OVER</b> 14%
<b>LIVE IN SJSO JURISDICTION</b> 163,500 people	<b>FEMALE PERSONS</b> 49.9%	<b>MALE PERSONS</b> 50.1%	
<b>AREA</b> 1,426 sq. miles	<b>MEDIAN AGE</b> 36 years	PER 2024 CA CENSUS	

## EMPLOYEE DEMOGRAPHICS

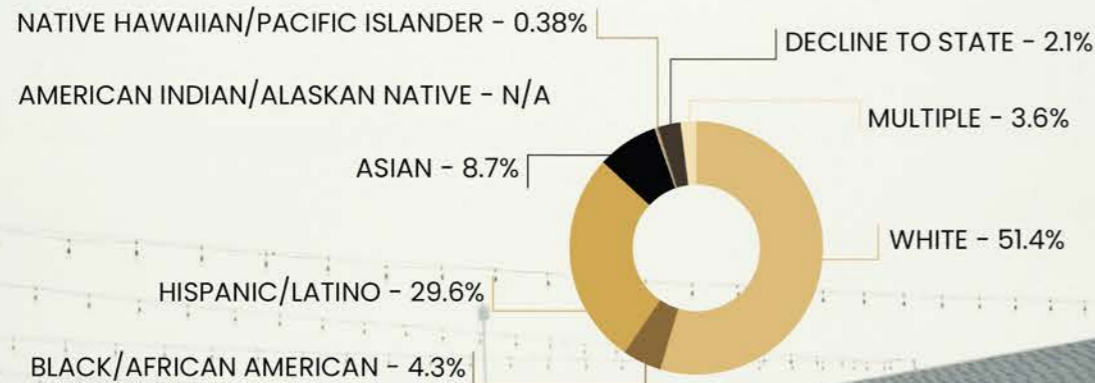


**DEPUTY SHERIFFS: 321** <sup>+43%</sup>

**CORRECTIONAL OFFICERS: 237** <sup>+17%</sup>

**PROFESSIONAL STAFF: 217** <sup>+4%</sup>

**TOTAL EMPLOYEES: 775** <sup>+27%</sup>



**380** <sup>+5%</sup> TRAININGS ATTENDED      **12** <sup>+40%</sup> HOSTED TRAININGS      **22** <sup>+316%</sup> PROMOTIONS

### BIANNUAL DEPUTY SHERIFF

Trainings Include:

- Tactical Firearms
- Driver Training/Awareness
- Arrest & Control
- De-Escalation & Strategic Communications
- Use of Force
- First Aid/CPR

### MANDATORY FIREARM QUALIFICATIONS

- Pistol every 2 months
- Rifle every 3 months
- Shotgun every 4 months

### ANNUAL CORRECTIONAL OFFICER

Trainings Include:

- First Aid/CPR
- Dream Team -Team Building Course
- Ethics for Law Enforcement
- Advanced Arrest and Control

**2,064** <sup>+44%</sup> TOTAL APPLIED      **43** <sup>+88%</sup> TOTAL HIRED      **134** <sup>+22%</sup> TOTAL VACANCIES

### DEPUTY SHERIFF ACADEMY

The POST Academy is a 20-week program consisting of 740 hours of intensive, hands-on training designed to prepare recruits for the challenges of a law enforcement career.

**26 STARTED**      **14 GRADUATED**

### FIELD TRAINING PROGRAM

After POST Academy, deputies train for 6 months under a Field Training Officer, applying academy knowledge in real-world scenarios while learning the agency's policies and procedures.

**16 PARTICIPATED**      **12 COMPLETED**      **6 IN-PROGRAM**

### CORRECTIONS ACADEMY

A 6-week academy that adheres to BSCC Standards and Training for Corrections (STC) requirements, delivering essential core training for entry-level Adult Detention staff.

**26 STARTED**      **17 GRADUATED**

### ON THE JOB TRAINING

Two-month program pairs officers with a training officer for one-on-one mentorship, allowing them to rotate through all three jail facilities and apply the skills learned in the academy.

**16 PARTICIPATED**      **12 COMPLETED**      **6 IN-PROGRAM**



10



# PATROL

The Patrol Division is dedicated to providing the best service possible to the citizens of San Joaquin County. The Patrol Division is organized to provide emergency first response, investigation of reported crimes, provide specialized police services, assist citizens, and create safe neighborhoods.

**44,536** <sup>-57.9%</sup> CALLS FOR SERVICE    **86,100** <sup>-33.6%</sup> TOTAL INCIDENTS    **3,057** <sup>.3%</sup> TOTAL PATROL ARREST    **20,064** <sup>.45%</sup> SELF-INITIATED ACTIVITY    **17,691** <sup>-2.5%</sup> REPORTS TAKEN

**45,623** <sup>18.6%</sup> 10 MIN RESPONSE CALLS    **38,250** <sup>21.3%</sup> 5 MIN RESPONSE CALLS    **11 minute and 47 seconds** <sup>-17%</sup> PRIORITY 1 CALLS - AVERAGE RESPONSE TIME    **21,500** <sup>31.4%</sup> FOLLOW-UPS

# COMMUNICATIONS CENTER



The Dispatch Center is a 24/7 public safety answering point, handling emergency and service calls. They assess the urgency of each situation and direct appropriate resources, often providing lifesaving instructions until help arrives. Our dispatchers play a vital role in supporting the Sheriff's Office and the citizens of San Joaquin County.

**308,616** <sup>4.2%</sup> TOTAL CALLS RECEIVED    **60,844** <sup>3.2%</sup> 911 CALLS    **14,629** <sup>-21%</sup> EMERGENCY CALLS

**163,903** <sup>18.5%</sup> NON-EMERGENCY CALLS    **507** <sup>-11.2%</sup> TEXT-A-TIP CALLS

**69,240** <sup>-3.8%</sup> OUTBOUND CALLS MADE    **536** <sup>39.3%</sup> 10,504 Total Messages TEXT-TO-911

**1 minute and 39 seconds** <sup>-6.8%</sup> AVERAGE CALL LENGTH

- TOP 5 - COMMON CALLS**
1. 584B - SUSPICIOUS PERSON
  2. 583 - WELFARE CHECK
  3. 601J - ALARM SOUNDING
  4. 579 - DISTURBANCE
  5. 506Z - SHELTER CAPACITY

11



# ANIMAL SERVICES

Animal Services is responsible for protecting public health and safety by enforcing local, state, and federal laws and regulations related to the care of domesticated animals in the unincorporated areas of San Joaquin County.



**8,653** <sup>-4.8%</sup> CALLS FOR SERVICE  
**304** <sup>30.3%</sup> REPORTS TAKEN  
**1,431** <sup>-11.5%</sup> LICENSES ISSUED  
**34** <sup>-14%</sup> FELONY INVESTIGATIONS  
**93** <sup>102.2%</sup> ANIMALS RETURNED TO OWNERS

# MOUNTED PATROL

Established in 2019, the Mounted Patrol Unit (MPU) blends American West traditions with modern policing, handling outreach, ceremonies, patrol, search and rescue, and crowd management.

**45** <sup>26.2%</sup> COMMUNITY EVENTS    **1,150** <sup>-33.8%</sup> TRAINING HOURS  
**9** <sup>40%</sup> PATROL DEPLOYMENTS    **54** <sup>-7%</sup> EVENT ATTENDED

# CANINE

Established in 1991, our K-9 unit is a vital asset to patrol operations and the community. Each team consists of a deputy sheriff and their K-9 partner, utilizing breeds such as German Shepherds, Belgian Malinois & Dutch Shepherds.

**288** <sup>32.7%</sup> APPREHENSIONS    **58** <sup>34.3%</sup> TOTAL FORCE    **455** <sup>-6.6%</sup> TOTAL DEPLOYMENTS  
**24** <sup>23.3%</sup> K9 DEMONSTRATIONS    **262** <sup>-15%</sup> SEARCHES    **620** <sup>26.5%</sup> TRAINING HOURS





# BOATING SAFETY

The Boating Safety Unit operates year-round, patrolling 700+ miles of waterways to ensure safety for residents and visitors, focusing on Boating Under the Influence (BUI) enforcement and search and rescue operations.

- 24 <sup>-80%</sup> BUI ARRESTS
- 55 <sup>558%</sup> BOATING ACCIDENTS
- 28 <sup>605%</sup> SARBOT DEPLOYMENTS
- 3 <sup>-28.6%</sup> FATALITIES
- 12 <sup>67%</sup> VICTIM RECOVERIES
- 20 <sup>222%</sup> VESSELS REMOVED
- 18 <sup>118%</sup> INJURIES
- 153 <sup>82%</sup> OTHER AGENCY ASSISTS
- 3 <sup>40%</sup> STOLEN BOATS RECOVERED

# DIVE TEAM

In 2025, the Dive Rescue Team was established to provide trained personnel and certified divers to respond to water-related incidents for victim rescue and recovery. The team conducts underwater searches for evidence, investigates accidents, documents recovered items, and assists outside agencies with dive operations as resources allow.

- 20 CALL OUTS
- 20 BODIES RECOVERED
- 20 SEARCH
- 2 OUT OF COUNTY MUTUAL AID
- 33 RECOVERY OPERATIONS
- 33 VEHICLES RECOVERED



# EOD

Established in 1979, The Explosive Ordnance Disposal (EOD) team, or "Bomb Squad," protects San Joaquin County by safely identifying, evaluating, and disposing of explosive hazards. Committed to professionalism and expert response, the team handles incidents involving explosives, IEDs, and other hazardous materials to ensure public safety.

- 114 <sup>19.2%</sup> DEPLOYMENTS
- 7 <sup>80%</sup> BOMB THREATS
- 157 <sup>134%</sup> DESTRUCTIVE DEVICES
- 300 <sup>—</sup> TRAINING HOURS

## FIREWORKS OPERATIONS RESULTS

- 11,519 lbs <sup>42.9%</sup> FIREWORKS SIEZED
- 36 <sup>-30.6%</sup> ARRESTS
- 7 <sup>—</sup> FIREARMS SEIZED
- 5 <sup>50%</sup> SEARCH WARRANTS

# ARSON TEAM

- 37 ARSON/SUSPICIOUS FIRE INVESTIGATIONS
- 12 ARSON FIRE ARRESTS

The Arson Team is part of the San Joaquin County Fire Investigation Unit, which consists of fire personnel from multiple agencies throughout San Joaquin County. The team assists with criminal investigations and the arrest of arson and suspicious fire suspects, and is responsible for monitoring and ensuring compliance of all registered arson offenders within the county.

# UAS

Established in 2018, Unmanned Aerial Systems (UAS) enhance public safety and reduce risks. Operated by trained staff, they support search and rescue, tactical operations, disasters, and community events with advanced technology.



- 29 <sup>63.6%</sup> DRONE AIRCRAFTS
- 100% <sup>—</sup> PATROL PILOT COVERAGE
- 357 <sup>11%</sup> DEPLOYMENTS
- 220 <sup>-20.4%</sup> TRAINING HOURS

# TABLE OF CONTENTS

MISSION STATEMENT (OPERATIONS & CUSTODY).....	1
LETTER FROM THE SHERIFF.....	2
175TH ANNIVERSARY BADGE.....	3
YEAR AT A GLANCE.....	4-5
ORGANIZATIONAL CHART.....	6-7
DEMOGRAPHICS.....	8
EMPLOYMENT AND TRAINING.....	9
PATROL.....	10
COMMUNICATIONS CENTER.....	10
CANINE.....	11
ANIMAL SERVICES.....	11
MOUNTED PATROL.....	11
BOATING SAFETY.....	12
DIVE TEAM.....	12
EXPLOSIVE ORDNANCE DISPOSAL TEAM (EOD).....	13
ARSON TEAM.....	13
UNMANNED AERIAL SYSTEMS TEAM (UAS).....	13
SPECIAL TACTICS AND WEAPONS TEAM (SWAT).....	14
CRISIS NEGOTIATION TEAM (CNT).....	14
OFF-HIGHWAY VEHICLE (OHV).....	14
INVESTIGATIONS.....	15
TECHNICAL SERVICES.....	15
AGRICULTURE GANG NARCOTICS ENFORCEMENT TEAM (AGNET).....	16
COMMUNITY CAR.....	16
MOTORS.....	16
RESEARCH AND INTELLIGENCE DIVISION (RAID).....	17
COMMUNITY REVITALIZATION.....	17
CUSTODY DIVISION.....	18-19
CUSTODY EMERGENCY RESPONSE TEAM (CERT).....	18
TRANSPORTATION.....	19
JAIL OPERATIONS.....	19
RECORDS.....	20
CIVIL.....	20
COURTS.....	20
METRO NARCOTICS TASK FORCE (METRO).....	21
EVIDENCE ROOM.....	21
CADETS.....	22
STARS.....	22
HONOR GUARD.....	22
CHAPLAINS.....	22
PUBLIC INFORMATION.....	22
AWARDS.....	23
RETIREEES.....	23



## OPERATIONS MISSION STATEMENT

The San Joaquin County Sheriff's Office is dedicated to delivering quality service through the creation of partnerships with the people we serve.

All members of this office will carry out their duties and responsibilities in such a manner as to afford dignity, respect, and compassion to every individual with whom they come in contact.

With community partnerships as our foundation, we are driven by goals to enhance the quality of life, investigating problems as well as incidents, seeking solutions, and fostering a sense of security in communities and individuals. We nurture public trust by holding ourselves to the highest standards of performance and ethics.

## CUSTODY MISSION STATEMENT

The San Joaquin County Sheriff's Custody Division will promote safe, secure and humane housing for pre-sentenced and sentenced inmates. Service to the general public and the Criminal Justice System will be of the highest quality.

Operation of the facilities will be consistent with the principles of direct supervision, will at all times meet Minimum Jail Standards as defined in Title 15 of the California Code of Regulations, and will insure public safety. Programs and services will be made available to influence positive behavior with the intent to provide the opportunity for inmates to be returned back to the community in equal or better condition both physically and psychologically than when received.

These goals will be met, in a cost effective manner while assuring staff have a productive, safe and secure work environment and providing them with the vision, leadership tools, and resources to fulfill this mission.

- ▲ Increase percentage compared to 2024
- ▼ Decrease percentage compared to 2024
- No change in percentage compared to 2024

# ADMINISTRATION

- HISTORIAN
- INTERNAL AFFAIRS

## OPERATIONS

### PATROL

- ADMINISTRATIVE
- PATROL
- COMMUNICATIONS CENTER
- BOATING SAFETY
- MOUNTAIN HOUSE
- ANIMAL SERVICE
- MOUNTED PATROL
- CRITICAL RESPONSE TEAM

### SPECIAL SERVICES

- AGNET
- RAID
- CRU
- COMM CAR
- SRD
- MOTOR UNIT
- AIRPORT
- ABATEMENT
- CADETS

### METRO

- JOINT TERRORISM TASK FORCE
- JAIL INVESTIGATIONS
- TECHNICAL SERVICES

### INVESTIGATIONS

- PROPERTY
- COLD CASE
- CASA
- PERSONS
- HIGH-TECH CRIMES
- HUMAN TRAFFICKING
- JAIL INVESTIGATIONS
- TECHNICAL SERVICES

## PROFESSIONAL STANDARDS

- RANGE
- PIO
- EVIDENCE ROOM
- CCW'S
- CO ACADEMY
- BACKGROUNDS
- RECRUIT TRAINING OFFICERS

## COURTS

- CIVIL
- COURTS

## ADMINISTRATIVE SERVICES

- MANAGEMENT SERVICES
- INFORMATION SYSTEM
- PUBLIC ADMINISTRATOR

## CUSTODY

### PROGRAMS & PROJECTS

- RECORDS
- INMATE PROGRAMS
- COMPLIANCE/TRAINING
- REALIGNMENT UNIT
- POPULATION MANAGEMENT
- INMATE HEALTH & REHABILITATION

### JAIL OPERATIONS

- JAIL CORE
- SOUTH JAIL
- HONOR FARM
- CLASSIFICATION
- CERT
- CENTRAL SERVICES

### SWORN OPERATIONS

- JAIL CRIMES
- ALTERNATIVE WORK PROGRAM
- CCORPS
- TRANSPORTATION

# ORGANIZATIONAL CHART

# YEAR AT A GLANCE



## MARCH

After two years of planning and training, the San Joaquin County Sheriff's Office launched its first-ever Dive Team to strengthen emergency response across the county's waterways. Composed of ten specially trained deputies, the team supports search and rescue, vehicle recovery, and mutual aid operations, helping ensure faster response times when every second counts.

## APRIL 14<sup>TH</sup>

The Cold Case Unit identified Edward Donald Raymond as the victim of a 1981 homicide, using advancements in fingerprint technology to solve a case that had remained unsolved for more than four decades. Although Raymond was never reported missing, investigators continue seeking information to better understand the circumstances of his death and bring long-overdue justice and closure to this case.



## OCTOBER 27<sup>TH</sup>

The opening of the Dorothy J. Heisler Detention and Programs Facility marked a major milestone for the Sheriff's Office, introducing a modern correctional center designed to enhance safety, security, and rehabilitation opportunities. The French Camp facility expands housing capacity, includes a dedicated mental health unit and program space, and honors longtime Sheriff's Office employee Dorothy J. Heisler for her 47 years of service.



## NOVEMBER 29<sup>TH</sup>

Deputies responded to a mass-casualty shooting in Stockton that left 14 people injured and four deceased. A large-scale, multi-agency investigation followed, with local and federal partners assisting as detectives worked to identify those responsible and support the impacted community.



## APRIL 22<sup>ND</sup>

A multi-agency operation led by HSI Stockton and the San Joaquin County Sheriff's Office resulted in the seizure of 189 kilograms of cocaine from a semi-truck intercepted in Tracy. The investigation, which included SWAT, and a K9 deployment, safely took two suspects into custody.



## JULY 11<sup>TH</sup>

The AGNET Unit, working with multiple local, state, and federal partners, executed coordinated search warrants across the county in a gang-related kidnapping and torture investigation, resulting in eight arrests. The operation removed multiple illegal firearms, ammunition, and cash from the community and was part of the FBI's nationwide Summer Heat initiative targeting violent offenders and organized gangs.

## AUGUST 2<sup>ND</sup>

The San Joaquin County Sheriff's Office hosted its first-ever Recruitment Open House, giving prospective applicants a behind-the-scenes look at careers in law enforcement. The event allowed participants to connect with deputies, correctional officers and recruiters, learn about the hiring process, and experience elements of the physical agility test to help prepare future candidates.



## AUGUST 12<sup>TH</sup>

The Cold Case Unit identified a homicide victim found in 1982 as Danny Joe Jentzen, ending a 43-year mystery through advances in forensic DNA and partnerships with Othram Inc. and the FBI. While his identity has been restored, the case remains under investigation and detectives continue seeking information to bring answers and justice in his death.

## DECEMBER 18<sup>TH</sup>

We partnered with the Family Justice Center to host Operation Christmas Cheer, a Giving Tree program supporting local children affected by human trafficking or abuse. The lobby tree displayed tags representing each child, and thanks to the generosity of our employees, all 50 wish lists were fulfilled, bringing joy and hope to families during the holiday season.



## DECEMBER 13<sup>TH</sup>

A coordinated multi-agency jail search targeted drugs and other illegal items in custody facilities. Partner agencies—including county probation and nearby sheriff's offices—provided support, demonstrating strong regional collaboration that boosts security, promotes safety, and upholds operational integrity.

# SPECIAL SERVICES DIVISION



## MOTOR UNITS

Motor Units in the Special Services Division are rapidly deployed to problem areas, addressing unsafe driving in school zones, supporting the Community Revitalization Unit, and responding to in-progress calls.

**89** <sup>82.5%</sup> EVENTS    **50** <sup>144.8%</sup> ARRESTS    **2,806** <sup>105.2%</sup> CITATIONS

## AGNET

The Agricultural, Gangs, Narcotics Enforcement Team (AGNET) investigates agricultural, gang, and street-level narcotics crimes, as well as fugitive apprehension, vice crimes, public corruption, and voter fraud. AGNET also addresses sideshow operations, shooting trends, and other high-priority cases, functioning as a street crimes unit with investigative capabilities.

<b>121</b> <sup>57.4%</sup> PROBATION SEARCHES	<b>292</b> <sup>7%</sup> SPECIAL OPERATIONS	<b>130</b> <sup>-11.4%</sup> WARRANT ARRESTS
<b>83</b> <sup>-3.4%</sup> RECOVERED ITEMS	<b>129</b> <sup>53.4%</sup> SEARCH WARRANTS	<b>137</b> <sup>76%</sup> FRESH ARRESTS
<b>46</b> <sup>92.8%</sup> SUBJECT STOPS	<b>331</b> <sup>49.5%</sup> TOTAL CASES	

## COMMUNITY CAR

Community Car Deputies provide personalized, community-focused policing within their assigned microbeats, responding to calls and attending community meetings. They monitor crimes in their areas, take reports, and determine whether to handle investigations themselves, involve other units, or refer them to another division, ensuring a balance between follow-ups and presence in their beats.

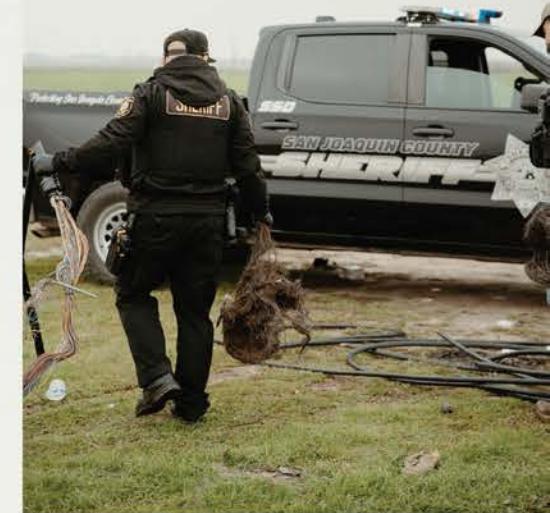
<b>143</b> <sup>-70.3%</sup> ARRESTS	<b>149</b> <sup>137.5%</sup> PARKING CITATIONS	<b>18</b> <sup>-58.6%</sup> COMMUNITY MEETINGS
<b>377</b> <sup>113.5%</sup> FIELD INTERVIEWS	<b>89</b> <sup>8.2%</sup> COMMUNITY EVENTS	<b>1,563</b> <sup>76.3%</sup> TRAFFIC STOPS

This division addresses street crimes, quality-of-life issues, and complex incidents while supporting other divisions. Using an Intelligence-Led Policing model, SSD leverages data from the Research and Intelligence Division (RAID) to identify problem areas, groups, and crime trends. Flexible and adaptable, SSD personnel can be reassigned to various operations, pooling resources to quickly tackle complex problems without being constrained by minimum staffing requirements.

## RAID

The Research and Intelligence Division (RAID), formerly known as Crime Analysis, drives the Intelligence-Led Policing model by collecting and analyzing data to inform resource deployment and investigations. RAID's functions include subject and location workups, crime predictions, tactical forecasting, cellular forensics, social media analysis, and crime trend statistics. Their insights allow personnel to adjust schedules and strategies to address emerging issues effectively.

<b>65</b> <sup>43%</sup> CELL SITE & WIRE INTERCEPTS	<b>1,378</b> <sup>-10.3%</sup> TOTAL REQUESTS
<b>197</b> <sup>-11%</sup> POSITIVE SUBJECT MATCHES	<b>311</b> <sup>-3.6%</sup> STATISTICS REQUESTS
<b>271</b> <sup>54.5%</sup> SELF INITIATED ACTIVITY	<b>40</b> <sup>25.4%</sup> LIVE ASSISTS
<b>1,107</b> <sup>-21.4%</sup> LAW ENFORCEMENT ASSISTS	<b>18</b> <sup>-5.4%</sup> SUSPECT BULLETINS
<b>26</b> <sup>-110.3%</sup> CRIME TRENDS ANALYSIS	<b>189</b> <sup>55.3%</sup> PROPERTY WORKUPS
	<b>215</b> <sup>77.4%</sup> SUBJECT WORKUPS



## COMMUNITY REVITALIZATION

<b>3,800 lbs   3,800 ft</b> <sup>-140.7%</sup> RECOVERED COPPER WIRE	<b>342</b> <sup>-16.9%</sup> ENCAMPMENTS CLEANED
<b>109</b> <sup>130.3%</sup> ILLEGAL DUMPS LOGGED	<b>142</b> <sup>-5.4%</sup> ENCAMPMENTS CLEARED
	<b>2,181</b> <sup>4.8%</sup> ENCAMPMENTS MAINTAINED

The Community Revitalization Unit (CRU) tackles long-term quality-of-life issues like homeless encampments, property abatement, graffiti, illegal dumping, and abandoned vehicles. It also investigates copper wire theft and works with county departments to address problems using intelligence & analysis.



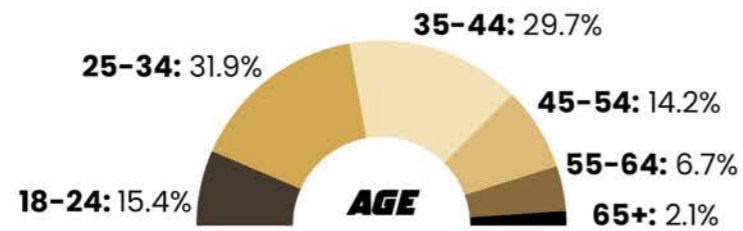


JAIL

# CUSTODY DIVISION

The Custody Division is responsible for operating an Adult Correctional Facility in compliance with California Code of Regulations Title 15, Division 3, the Custody Division houses both pretrial detainees and sentenced individuals. It encompasses various units and programs, including the Classification Unit, Alternative Work Program, Honor Farm, Jail Core/South Jail, CCORPS, Realignment Unit, Transportation, and Central Services.

## INMATE STATISTICS



## TOP 5 CHARGES

1. VC 23152 (B) - DUI W/BAC 0.08 OR HIGHER
2. VC 23152 (A) - DUI
3. PC 148 (A) (1) - RESISTING ARREST
4. PC 273.5 (A) - DOMESTIC VIOLENCE
5. VC 23578 - DUI ENHANCEMENT



## GERT

The Custody Emergency Response Team (CERT), established in 2004, handles jail disturbances, riots, escorts high-profile inmates, gathers intelligence, and conducts searches across all three jail facilities and the courthouse.

### SEARCHED

1,874 <sup>103.1%</sup>

BUNKS

1,834 <sup>140.4%</sup>

INMATES

### FOUND

112 <sup>147.3%</sup>

JAIL MADE WEAPONS

20.5g <sup>107.7%</sup>

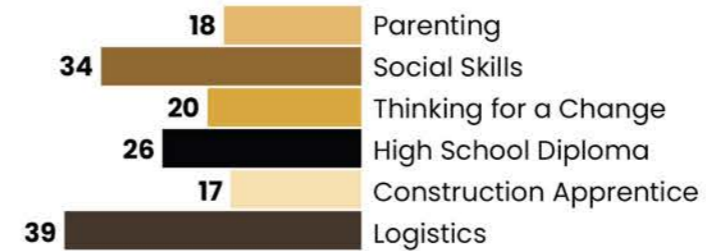
MARIJUANA

111 <sup>179.3%</sup>

UNPRESCRIBED PILLS



## INMATE PROGRAMS GRADUATES



71% <sup>15.2%</sup>  
RECIDIVISM RATE

49 DAYS <sup>10.8%</sup>  
AVERAGE LENGTH OF STAY

14,138 <sup>-12%</sup>  
TOTAL RELEASES

13,699 <sup>-17%</sup>  
TOTAL BOOKINGS

## TRANSPORTATION

The Transportation Unit is responsible for safely transporting inmates to court, medical appointments, state prisons, and other institutions throughout California, while also providing hospital security for County Jail inmates receiving treatment at the County Hospital.



224,251  
TOTAL MILES DRIVEN

28,812  
COURT APPEARANCES FACILITATED

1,779  
MEDICAL APPOINTMENTS SUPPORTED

31,677  
TOTAL INMATE TRANSPORTS COMPLETED

1,086  
PRISON TRANSPORTS COMPLETED

## JAIL OPERATIONS

This unit investigates criminal activity within the jail, working closely with Jail Crimes investigators to ensure the safety and security of the facility, staff, and incarcerated population. The team includes custody canines that assist in detecting contraband, along with professional staff who provide administrative support, coordinate with the District Attorney's Office, and manage reporting and budget functions.

292  
ASSAULTS DOCUMENTED

905  
TOTAL DOCUMENTED REPORTS

334  
CONTRABAND SEIZED

1182  
CANINE SEARCHES

# RECORDS

The Records Unit processes law enforcement information in compliance with legal requirements, providing 24-hour public service and internal records management. Its goal is to efficiently store, retrieve, and process data to support investigations and provide statistical value to the criminal justice community.

- 1,050** <sup>17%</sup> RESTRAINING ORDERS
- 5,295** <sup>83.9%</sup> DOCUMENTED REPORTS
- 1,108** <sup>-6.4%</sup> CITATIONS PROCESSED
- 1,529** <sup>70.2%</sup> DOCUMENTS REPORTS SOLD
- 329** <sup>24.6%</sup> REPOSSESSIONS
- 209** <sup>10.8%</sup> PUBLIC RECORDS ACT REQUESTS
- 20,595** <sup>5.9%</sup> WARRANT CHECKS
- 6,646** <sup>7%</sup> WARRANT HITS

# CIVIL

The Civil Unit serves court-issued civil process as prescribed by law, including summons and complaints, small claims documents, restraining orders, bench warrants, and evictions. The unit also enforces judgments by levying wages, bank accounts, vehicles, and other assets of judgment debtors.

- 1,027** <sup>-13.8%</sup> EVICTION FILES OPENED
- 1,012** <sup>-16.6%</sup> COMPLETED EVICTIONS
- 1,429** <sup>-17.1%</sup> LEVY ACTIONS SERVED
- 1,254** <sup>17%</sup> SUMMONS SERVED
- 1,732** <sup>-2.5%</sup> RESTRAINING ORDER REQUESTS
- 1,718** <sup>-2.5%</sup> RESTRAINING ORDERS SERVED

# METRO

The Metropolitan Narcotics Task Force (METRO) focuses on reducing illegal drug activity, apprehending offenders, and improving public safety. This specialized unit collaborates with law enforcement agencies to investigate narcotic sales, manufacturing, and trafficking.

- |   |  |   |
|---|--|---|
| <b>160</b> <sup>7.8%</sup><br>ARRESTS               | <b>14,189g</b> <sup>106.6%</sup><br>HEROIN         | <b>608,540g</b> <sup>-128.5%</sup><br>MARIJUANA     |
| <b>73</b> <sup>-31.2%</sup><br>SEARCH WARRANTS      | <b>213,034g</b> <sup>80.3%</sup><br>COCAINE        | <b>126,440</b> <sup>83.6%</sup><br>MARIJUANA PLANTS |
| <b>126,441g</b> <sup>99.6%</sup><br>FENTANYL POWDER | <b>213,601g</b> <sup>9.6%</sup><br>METHAMPHETAMINE | <b>4</b> <sup>-66.7%</sup><br>LABS PROCESSED        |
| <b>9,055</b> <sup>-184.3%</sup><br>FENTANYL PILLS   | <b>115</b> <sup>-72.9%</sup><br>GUNS               | <b>\$942,370</b> <sup>-42.6%</sup><br>CASH SEIZED   |

# COURTS

The Unified Court Services Division oversees security for San Joaquin County's four court facilities, managing in-custody inmates, temporary holding cells, courtroom security, and courthouse safety.

- 6** <sup>66.7%</sup> PROHIBITED ITEMS CONFISCATED
- 4** <sup>-93.3%</sup> INCIDENTS OR THREATS MANAGED
- 42** <sup>136.0%</sup> TOTAL REPORTS
- 32,889** INMATE APPEARANCES



# EVIDENCE ROOM

The Evidence Room is responsible for the intake, secure storage, management, and lawful disposition of property and evidence seized by deputy sheriff's across all divisions, ensuring proper chain of custody and accountability.

- |  |                               |
|--|-------------------------------|
| <b>HIGH-VOLUME CATEGORIES</b>  | <b>13,197</b>                 |
| <b>15.3% - NARCOTICS</b>   | <b>TOTAL ITEMS RECEIVED</b>   |
| <b>19.4% - FIREARMS &amp; RELATED ITEMS</b><br><i>(Firearms, Casings, Ammunition, Test Fire)</i> | <b>4,620</b>                  |
| <b>10% - DIGITAL EVIDENCE</b><br><i>(Cell Phones, Computer Accessories)</i>                      | <b>CASES SUPPORTED</b>        |
| <b>3.3% - BIOLOGICAL EVIDENCE</b><br><i>(DNA Swabs)</i>  | <b>2.86</b>                   |
| <b>52% - PROPERTY &amp; MISCELLANEOUS</b>  | <b>AVERAGE ITEMS PER CASE</b> |



## GADETS

Cadets are unsworn, part-time employees supporting administrative tasks, enforcement of parking violations, and Sheriff's Office events.

<b>923</b> <small>↓ -11.9%</small> VEHICLES REMOVED	<b>13</b> <small>↓ -7.4%</small> COMMUNITY EVENTS
<b>656</b> <small>↑ 33.5%</small> TOW RELEASES	<b>48</b> <small>↑ 4.3%</small> TOTAL TOWED CARS

## STARS

The Sheriff's Team of Active Retired Seniors (S.T.A.R.S.) program engages volunteers aged 50+ to support the Sheriff's efforts in crime prevention and other tasks.

<b>47</b> <small>↑ 0.6%</small> HOSTED MEALS	<b>27</b> <small>↓ -13.6%</small> MEDICAL DELIVERIES	<b>12</b> <small>↑ 28.6%</small> MLEC CALL OUTS	<b>29</b> <small>↓ -12.9%</small> COMMUNITY EVENTS
---	---	--	---



## HONOR GUARD

The Honor Guard, composed of deputies and correctional officers, represents the department by honoring fallen officers, presenting the national flag, and participating in memorial services.

<b>13</b> <small>↓ -20.7%</small> EVENTS	<b>14</b> <small>↑ 94.7%</small> FUNERALS	<b>14</b> <small>↑ 54.5%</small> CEREMONIES
---	--	--

## CHAPLAINS

Chaplains are dedicated volunteers offering 24/7 support during crisis and events, promoting wellness through faith and hope.

<b>44</b> <small>↑ 4.7%</small> COUNSELING SESSIONS	<b>4</b> <small>↓ -22.2%</small> CHAPLAINS	<b>39</b> <small>↑ 43.8%</small> CALL-OUTS
--	---	---



## PUBLIC INFORMATION

The Public Information Unit manages media, social media, community engagement, recruitment, and branding.

<b>4</b> <small>↑ 28.8%</small> PRESS CONFERENCES HELD	<b>2,975</b> <small>↑ 68.3%</small> MEDIA INQUIRIES
<b>78</b> <small>↓ -26.7%</small> VIDEOS PRODUCED	<b>195,000</b> <small>↓ -14.7%</small> WEBSITE TRAFFIC
<b>248</b> <small>↓ -3.3%</small> TOTAL SOCIAL MEDIA POSTS	<b>49</b> <small>↓ -72.2%</small> CITIZENS ACADEMY GRADUATES



## AWARDS

### MERITORIOUS SERVICE AWARD

Lieutenant Leonard Conn • Sergeant Justin Millmore • Detective Jordan Rosas • Detective Christopher Sterni • Detective David Nevezi • Detective Luis Ramos • Detective Jeremy Riley

### LIFE SAVING AWARD

Sergeant David Gherardi • Sergeant Brenton Souza • Deputy Andres Ruiz • Deputy Alexander Ting • Deputy Guadalupe Mendoza • Deputy Joseph Fuentes • Deputy Nicholas Kleinert • Deputy Michael Hernandez • Deputy Kevin Ontai • Correctional Officer Vicente Razo • Correctional Officer Rodrigo Zamora Fernandez

### COMMUNITY AWARDS:

Stop Stick "Hit of the Year" Award: AGNET Unit • Stockton Rotary Officer of the Year: Deputy Dorian Lasso • James McDermott American Legion Law & Order Award: Detective Luis Ramos • Italian Athletic Club Officer of the Year: Sergeant Matt Allen • Manteca Rotary Club Don I. Asher Memorial Officer of the Year Award: Deputy Mario Stroughter • Mountain House Public Safety Award: Deputy Dylan Davis • VeteransHelp.net First Responder Award: Deputy Estevan Lopez-Ayala

## RETIREEES

Tricia Anderson • Genevieve Bustamante • Kimberly De La Cruz • Michelle Domondon • Lawrence Gomez • Hugo Gudino • James Lenzi • Susan Mart • Armando Martinez • Jeffrey Miyai • Evaristo Ordaz • Lakeshia Person • Jeffery Rodrigues • Kelly Roe

## HONORING THE FALLEN

In 2025, we pause to honor and remember the names of the fallen who made the ultimate sacrifice in service to their communities. Each name represents a life of courage, commitment, and selfless dedication. We highlight them in solemn recognition of their service and in enduring gratitude for the legacy they leave behind.

- DEPUTY TIMOTHY CORLEW (RIVERSIDE COUNTY SO) – EOW: 01.08.2025
- DEPUTY HECTOR CUEVAS, JR. (SAN BERNARDINO COUNTY SD) – EOW: 03.17.2025
- OFFICER OSMAR RODARTE (MARYSVILLE PD) – EOW: 03.26.2025
- OFFICER SAMUEL RIVEROS (BALDWIN PARK PD) – EOW: 05.31.2025
- SERGEANT SHIOU LIH DENG (LOS ANGELES PD) – EOW: 06.23.2025
- PAROLE AGENT JOSHUA BYRD (CDCR) – EOW: 07.17.2025
- DETECTIVE JOSHUA KELLEY-EKLUND (LOS ANGELES COUNTY SD) – EOW: 07.18.2025
- DETECTIVE VICTOR LEMUS (LOS ANGELES COUNTY SD) – EOW: 07.18.2025
- DETECTIVE WILLIAM OSBORN (LOS ANGELES COUNTY SD) – EOW: 07.18.2025
- OFFICER LAUREN CRAVEN (LA MESA PD) – EOW: 10.20.2025
- DEPUTY ANDREW NUÑEZ (SAN BERNARDINO COUNTY SD) – EOW: 10.27.2025
- OFFICER ALEC SANDERS (ALHAMBRA PD) – EOW: 11.20.2025

# Fallen Officer Memorial



DONATE TODAY

*The San Joaquin County Sheriff's Foundation is moving forward with plans to build the Fallen Peace Officers Memorial at the Sheriff's Headquarters in French Camp—a reverent space honoring the men, women, and K9 officers who gave their lives protecting our community. We invite you to partner with us as we enter the groundbreaking and building phases.*



# MOVE BEYOND THE CITY LIMITS



**START YOUR  
CAREER TODAY**

**YOUR \$10,000 BONUS IS WAITING FOR YOU**



# SWAT

Established in 1986, the Special Tactics and Weapons Team (SWAT) Team protects lives during critical incidents with skilled and ethical law enforcement practices. Trained for high-risk situations like hostages, barricades, and terrorism, their core functions include command, containment, and entry/rescue operations.

**112** <sup>20.3%</sup>

**TOTAL SWAT OPERATIONS**

**6** <sup>-85.7%</sup>

**SUSPECT INITIATED CALL-OUTS**

**400** <sup>105%</sup>

**TRAINING HOURS**

# CNT

The Crisis Negotiation Team (CNT) handles critical situations involving hostages, barricaded suspects, or suicidal individuals, using skilled verbal communication to de-escalate and facilitate surrender.

**130** <sup>8%</sup>  
**TRAINING HOURS**

**12** <sup>-222%</sup>  
**NEGOTIATIONS**

**70**  
**DEPLOYMENTS**

# OHV

The goal of Off-Highway Vehicle (OHV) Enforcement Team is to provide a safe environment for the OHV community and the residents of the communities near the riding areas. The OHV team also helps preserve and protect sensitive natural resources within the county.

**460**  
**MILES DRIVEN**

**15**  
**COMMUNITY EVENTS**

**7**  
**VEHICLES**

**223**  
**AREA CHECKS**

**2**  
**PATROL DEPLOYMENTS**

**230**  
**CITATIONS**



# INVESTIGATIONS DIVISION

Committed to quality investigations and exceptional service, the Investigations Division supports victims, families, and the community while partnering with the District Attorney and law enforcement agencies. Guided by dedication and compassion, we strive to be San Joaquin County's leading investigative force.

### PROPERTY UNIT:

Investigates property-related offenses like burglary, theft, embezzlement, and document fraud in unincorporated areas, with specialized investigators.

### COLD CASE UNIT:

Investigates unsolved homicides and missing person cases, actively working on numerous files.

### HUMAN TRAFFICKING UNIT:

Committed to combating human trafficking through proactive investigations, victim-centered support, offender prosecution, professional training, community education, and strong partnerships with law enforcement and advocacy organizations.

### CASA UNIT:

Handles child abuse, sexual assault, elder abuse, missing children, and sex registrant monitoring, with investigators trained in these areas.

### PERSONS UNIT:

Focuses on crimes against persons, including murder, robbery, kidnapping, rape, and assaults, with expertise in homicide investigations and evidence processing.

### JAIL INVESTIGATIONS:

Responsible for investigating criminal activity within custody, protecting staff and inmates, and supporting the prosecution of offenses committed inside the institution.

<b>155 ROBBERY</b>	<b>70 HUMAN TRAFFICKING</b>	<b>817 OTHER PERSONS CRIMES</b>
<b>2,304 OTHER PROPERTY CRIMES</b>	<b>713 CHILD ABUSE/SEXUAL ASSAULT CASES</b>	<b>4 PROTOCOLS</b>
<b>567 IDENTITY THEFT</b>	<b>1,407 MISSING PERSONS</b>	<b>1,030 JAIL INVESTIGATIONS</b>
<b>299 COLD CASES</b>	<b>19 HOMICIDE</b>	<b>702 WARRANTS</b>

# TECHNICAL SERVICES

A key part of Investigations Division, specializes in processing crime scenes and safeguarding evidence to support criminal investigations. With professionalism and compassion, Evidence Technicians assist the community and ensure the integrity of the investigative process.

**3,000** <sup>-0.4%</sup>

**FIELD CALLS**

**729** <sup>54.8%</sup>

**LIVE SCAN/INK PRINTS**

**1,059** <sup>-73.6%</sup>

**FINGERPRINT COMPARISON**

**171** <sup>-20%</sup>

**PHOTOGRAPHIC LINEUPS**

**525** <sup>13.6%</sup>

**BALLISTIC EXAMINATIONS**



SHERIFF COUNTY OF SAN JOAQUIN

# BE THE FIRST TO KNOW

     @SJSHERIFF

[www.sjsheriff.org](http://www.sjsheriff.org)



7000 MICHAEL CANLIS BLVD  
FRENCH CAMP, CA 95231

(209) 468-4400

